



All Ireland County Quiz TV show, filmed at The Hub

DIMENSIONS:

- 51m length x 31m width x 8.8m height
- Floor area: 1,585m sq / 17,060ft sq
- Information/Merchandise counter: 50m sq / 525ft sq

ELECTRICAL:

- 2No. 200A Powerlock connectors for stage audio/lighting.
- 18No. MK Commando 32A 3-phase outlets mounted at 3m above Finished Floor Level (FFL).
- 6No. MK Commando 63A 3-phase outlets mounted at 3m above FFL.
- All above cabled in surface-mounted tray and trunking from sub-board in The Hub store.

ROOF:

- Roof membrane over 150mm insulation over Tegral Acoustic Lining.
- 6No. roof trusses, max universally distributed load (UDL) 1kN/sqm.

WALLS:

- (3) blockwork walls (white) & timber (red) panel system to feature end wall.
- Draping system to two length walls; additional flexible draping on width via mobile trussing system.
- High level windows for natural light, fitted with drapes for black-out as required.

ACCESS

Direct drive-in access from front car park via 2 loading doors (6m high x 5m wide).

CAPACITY

Concert (seated/standing): 1,939

Note: Seating may be hired in by The Hub at cost or provided by promoter.

INTERNET

Wireless Broadband throughout The Hub and meeting rooms (Users will require wireless receiver on laptop/PC); Download speed 3MB.

FLOOR PLAN OVERLEAF.

ADDITIONAL DRAWINGS AVAILABLE ON REQUEST.

“

When production companies ask us to recommend good venues from a technical point of view, there are five infrastructural areas that we consider: Height, power, hanging points, blackout (drapes) and access. The Hub in Kilkenny has all five. We found it an ideal venue and wouldn't hesitate to recommend The Hub to others in our industry.

”

Peter Canning, High Resolution Lighting Ltd.

FLOOR:

Non-slip Sikafloor 261 floor finish (dark grey). Floor slab can accommodate uniformly distributed live load of 15kN/m².

Dark grey wall-to-wall carpet available to cover entire floor space.

MECHANICAL:

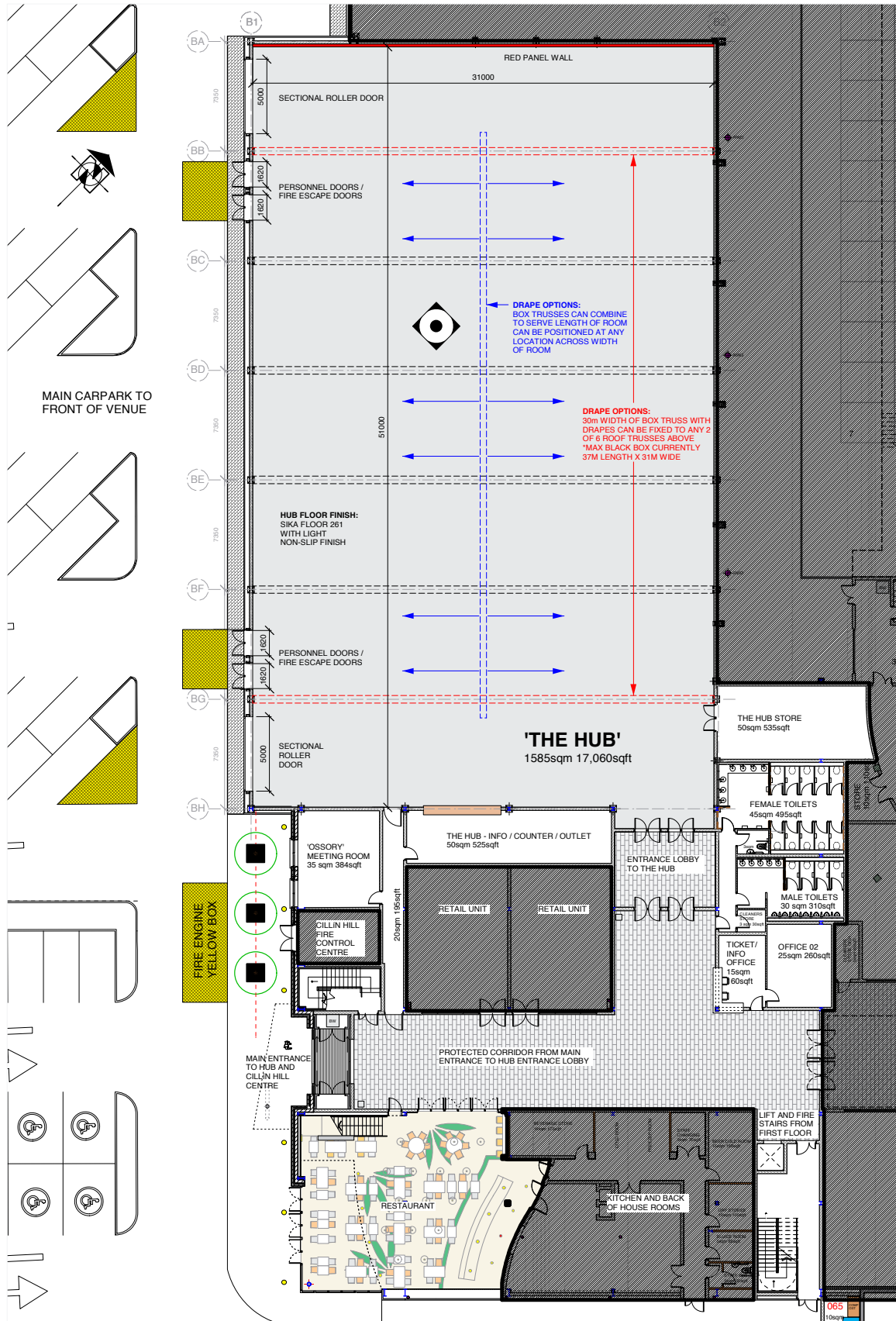
Water to 6No. points throughout space. Pipe drops in 3/4" to 2.5m above FFL. Air Handling Unit (AHU) mounted on roof (drawing available on request)

BACKSTAGE FACILITIES

Rooms detailed below can be used as meeting rooms, production/touring offices/or dressing rooms.

ROOM	LEVEL	L x W (m)	WC/SHOWER PRIVATE ACCESS	TEL	WI-FI	OVERLOOKING HUB
Harvest	1F	10 x 7	✓	✓	✓	✓
Barrack	1F	12 x 6	✓	✓	✓	✓
Pockocke	1F	7 x 4	✓	✓	✓	✓
Swift	1F	7 x 4	✓	✓	✓	✓
Ossory	GF	7 x 5	(WC public access)	✓	✓	(adjacent)

THE HUB GROUND FLOOR PLAN



Dalton and O'Donnell, Architects

Contact: (056) 7721407 // info@thehubkilkenny.ie // www.thehubkilkenny.ie

THE HUB